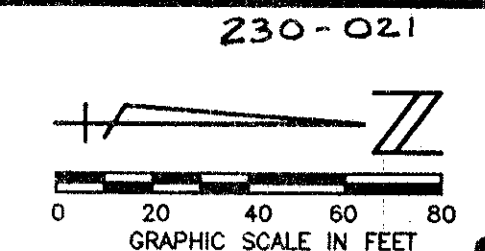


ADDISON RESERVE PARCELS SEVEN & EIGHT

PART OF GLENEAGLES/POLO CLUB WEST P.U.D.
BEING A REPLAT OF TRACT 7, TRACT 8, TRACT C AND TRACT R,
"ADDISON RESERVE PLAT THREE"
(P.B. 78, PGS. 5 - 12)
SITUATE IN SECTION 28, TOWNSHIP 46 SOUTH, RANGE 42 EAST
PALM BEACH COUNTY, FLORIDA
JULY, 1996 SHEET 5 OF 7

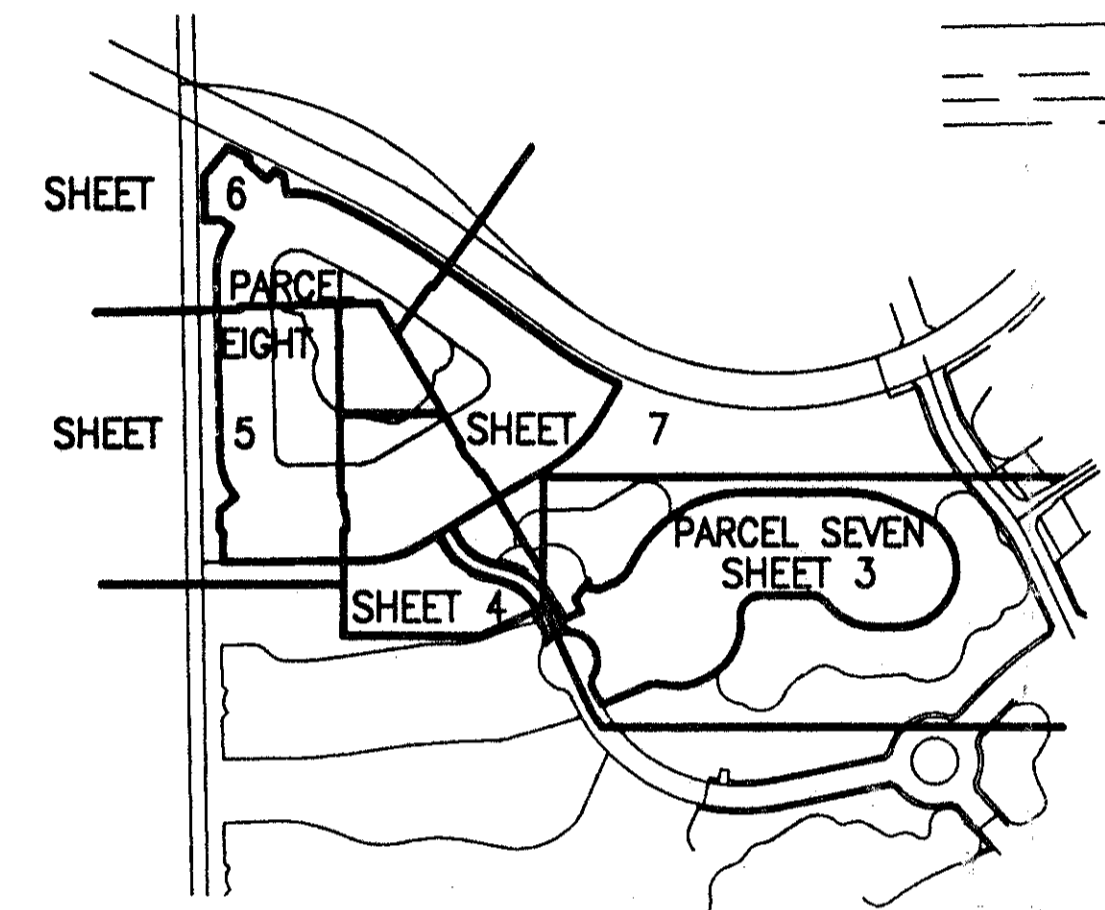


130

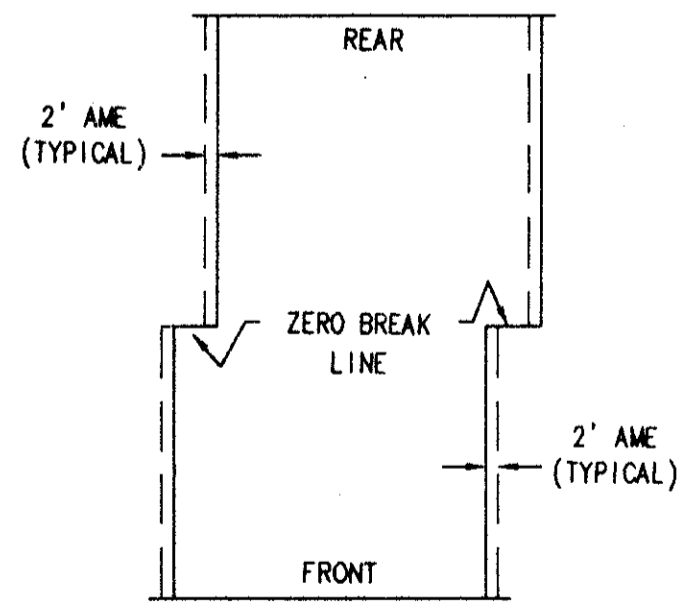
STATE OF FLORIDA
COUNTY OF PALM BEACH
THIS PLAT WAS FILED FOR
RECORD
THIS _____ DAY OF _____
AD, 1996 AND DULY RECORDED
IN PLAT BOOK _____ ON PAGES
_____ AND _____
DOROTHY H. WILKEN, CLERK
BY: _____, D.C.

*Pet. 80-215 (H)
ALOC. #0002
5/8/96/K*

SEE SHEET 6 OF 7



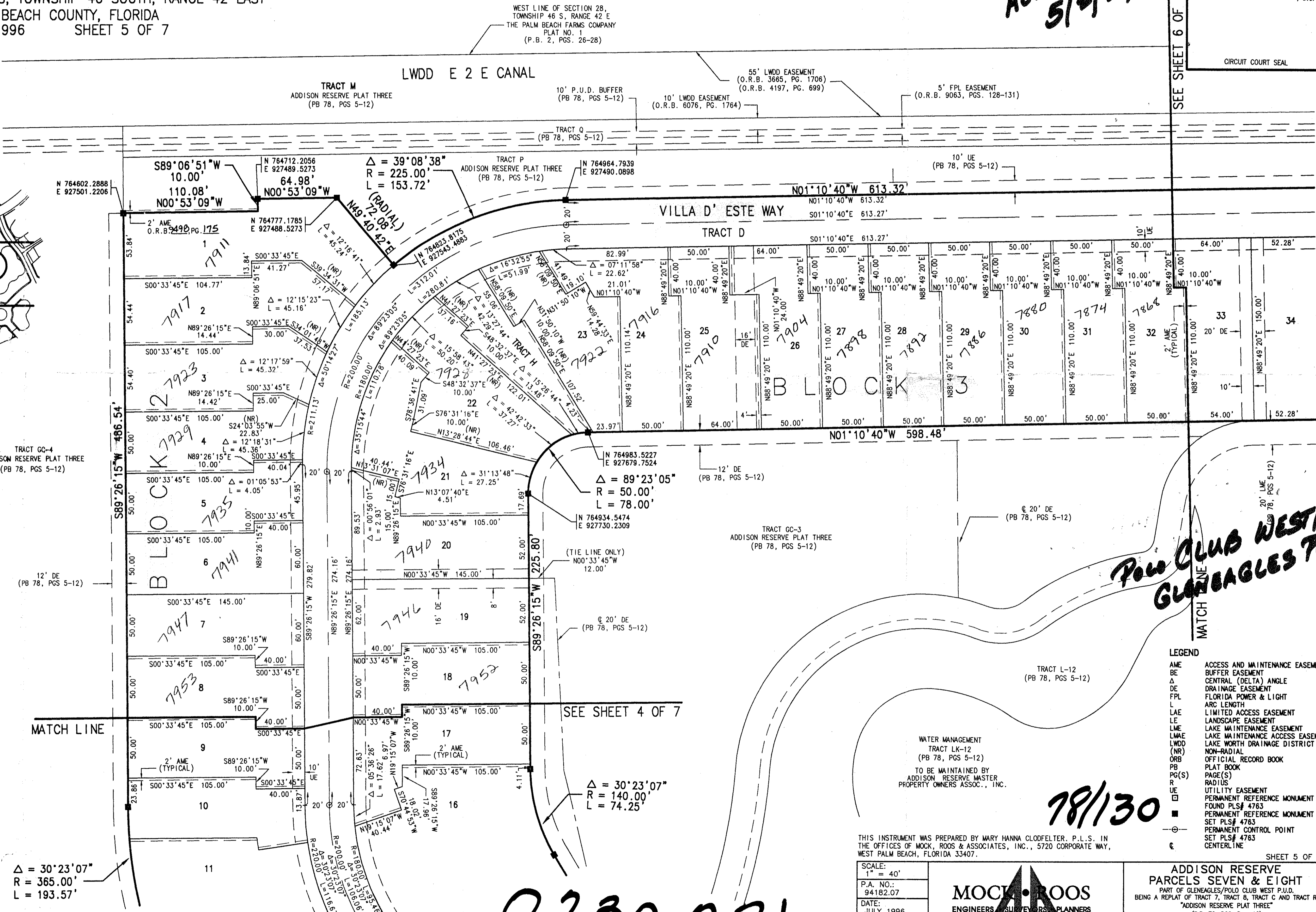
SHEET LOCATION MAP
NOT TO SCALE



DETAIL FOR ACCESS AND
MAINTENANCE EASEMENT
NOT TO SCALE

NOTE: AN ACCESS AND MAINTENANCE EASEMENT, 2 FEET
IN WIDTH, EXISTS ON EACH LOT FROM THE ZERO
BREAK LINE TO THE FRONT, AND FROM THE ZERO
BREAK LINE TO THE REAR, ADJACENT TO AND
CONTIGUOUS WITH THE ZERO LOT LINE OF THE
ADJOINING LOT. THIS EASEMENT IS FOR ACCESS
AND MAINTENANCE AND IS IN FAVOR OF THE
ADJOINING LOT. ITS SUCCESSORS AND ASSIGNS,
WITHOUT RECOURSE TO PALM BEACH COUNTY.

SUBDIVISION: Addison Reserve
BOOK: 78 PAGE: 30
FLOOD ZONE: B FLOOD MAP #215A
QUAD: 52 ZONING: RT5
SE: 80-215 ZIP CODE: 33446
PUD NAME: GLENEAGLES



*POLO CLUB WEST
GLENEAGLES PAD*

- LEGEND
- AME ACCESS AND MAINTENANCE EASEMENT
 - BE BUFFER EASEMENT
 - Δ CENTRAL (DELTA) ANGLE
 - DE DRAINAGE EASEMENT
 - FPL FLORIDA POWER & LIGHT
 - L ARC LENGTH
 - LAE LIMITED ACCESS EASEMENT
 - LE LANDSCAPE EASEMENT
 - LME LAKE MAINTENANCE EASEMENT
 - LMAE LAKE MAINTENANCE ACCESS EASEMENT
 - LWDD LAKE WORTH DRAINAGE DISTRICT
 - (NR) NON-RADIAL
 - ORB OFFICIAL RECORD BOOK
 - PB PLAT BOOK
 - PG(S) PAGE(S)
 - R RADIUS
 - UE UTILITY EASEMENT
 - PERMANENT REFERENCE MONUMENT
 - FOUND PLS# 4763
 - ◆ PERMANENT REFERENCE MONUMENT
 - SET PLS# 4763
 - PERMANENT CONTROL POINT
 - ⊕ SET PLS# 4763
 - ⊖ CENTERLINE

THIS INSTRUMENT WAS PREPARED BY MARY HANNA CLODFELTER, P.L.S. IN
THE OFFICES OF MOCK, ROOS & ASSOCIATES, INC., 5720 CORPORATE WAY,
WEST PALM BEACH, FLORIDA 33407.

MOCK ROOS
ENGINEERS SURVEYORS PLANNERS

SCALE: 1" = 40'
P.A. NO.: 94182.07
DATE: JULY 1996
DRAWING NO.: 45-42-28-98

5720 Corporate Way, West Palm Beach, Florida 33407
(407) 585-3113, fax 478-7248

ADDISON RESERVE
PARCELS SEVEN & EIGHT
PART OF GLENEAGLES/POLO CLUB WEST P.U.D.
BEING A REPLAT OF TRACT 7, TRACT 8, TRACT C AND TRACT R,
"ADDISON RESERVE PLAT THREE"
(P.B. 78, PGS. 5 - 12)
SITUATE IN SECTION 28, TOWNSHIP 46 SOUTH, RANGE 42 EAST
PALM BEACH COUNTY, FLORIDA

SHEET 5 OF 7

REV: 9-17-96
CAD FILE: CADD\ADDPR11

0230-021

78/130